

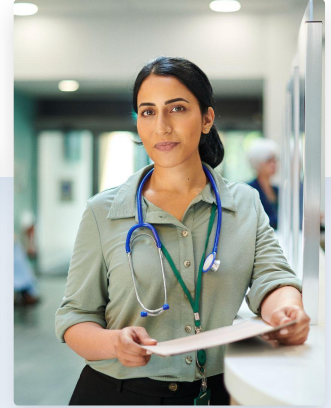


ce broker
By Propelus

Introduction to CE Broker

Licensee Webinar

December 10, 2025



Agenda

What we'll cover today

- CE Broker Overview
- How to Sign Up
- Account Options
- Course History and Transcripts
- Reporting Continuing Education
- Finding Courses
- Support
- Q & A



cebroker
By Propelus



Jason Grubb
Client Success Manager



Deb Carter
*Senior Client Success
Manager & Solutions
Consultant*



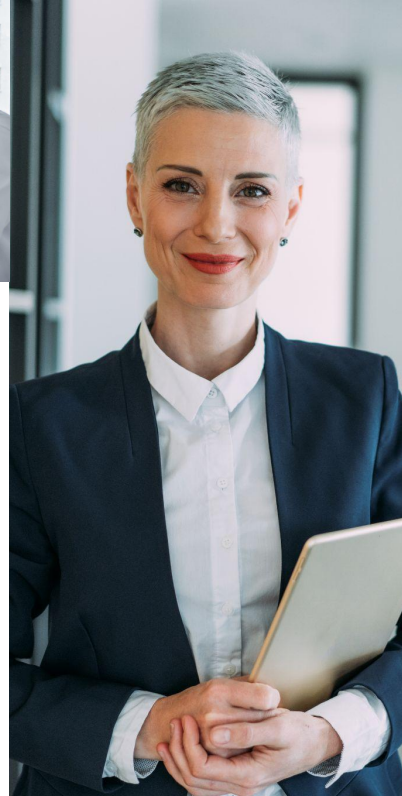
Kenya DuBrule
Board Support Specialist



Propelus

Powering professionals





Proudly serving

300+

Boards

5 million+

Licensed professionals

350+

Unique professions

6,500+

Education providers



CE Broker has proven success in Mental and Behavioral Health



Tennessee
Department of
Health



Florida Board of Clinical
Social Work, Marriage and
Family Therapy and Mental
Health Counseling



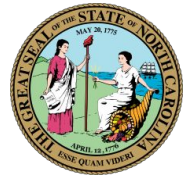
Texas Behavioral
Health Executive
Council



Georgia
Secretary of State



South Carolina Department of
Labor, Licensing, and
Regulation



North Carolina
Psychology Board



Wyoming Board
of Psychology



Michigan Department of
Licensing and Regulatory
Affairs



Kansas Behavioral
Sciences Regulatory
Board



New Hampshire
Office of Professional
Licensure and
Certification

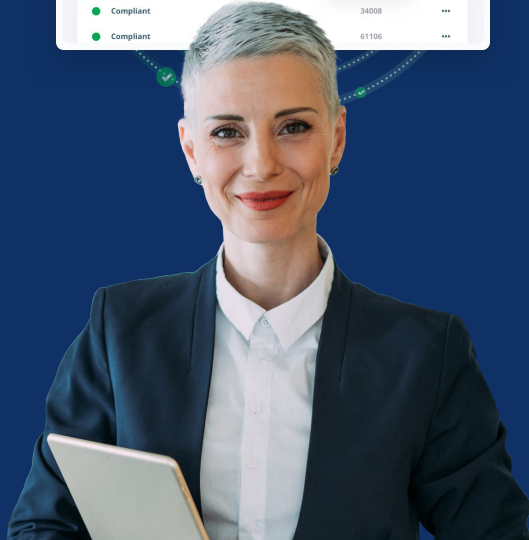
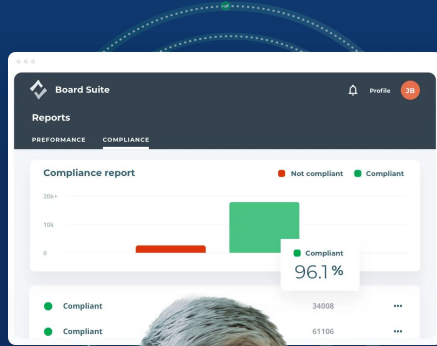


Ohio Counselor, Social
Worker & Marriage and
Family Therapist Board

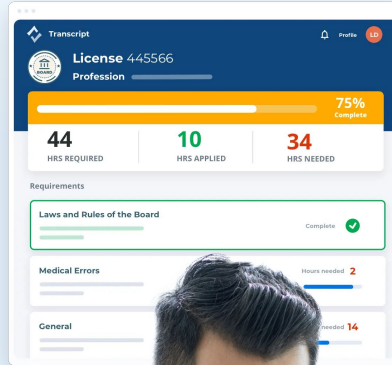


West Virginia Board of
Examiners in Counseling,
and Social Work

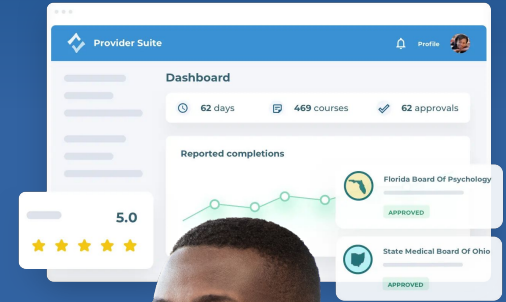
The Board Suite



The Licensee Experience



The Provider Suite



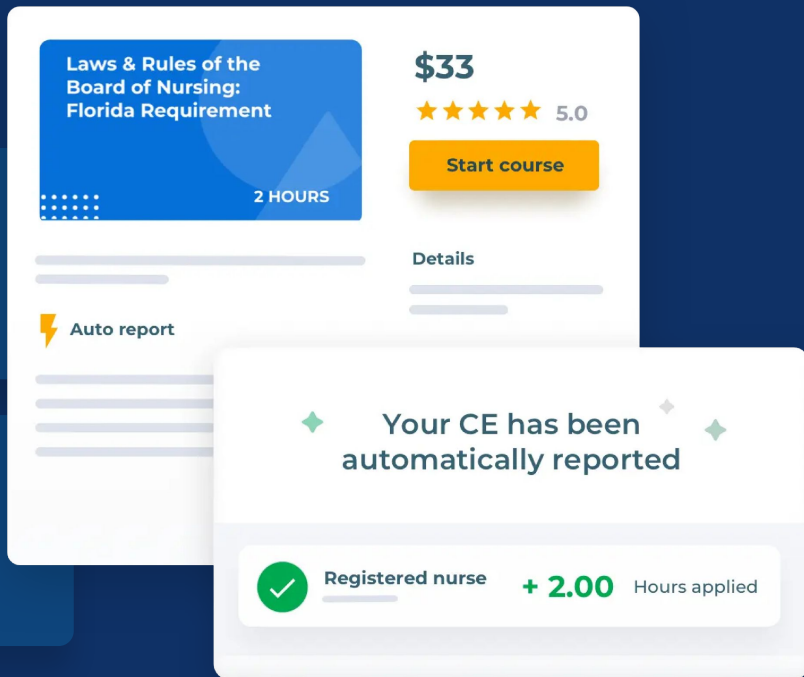
Course Reporting

Self Reported

Licensees manually, course-by-course, report completions and upload corresponding documentation.

Provider Reported

Providers can report completions on behalf of their learners, either individually, via bulk upload, or through a back-end connection, .



Account Options



Basic Account \$0/yr

- Check compliance status anytime
- Access course history
- Report CE/CME manually
- View requirements



Professional Account \$39.99/yr

- Personalized CE/CME Compliance Transcript with a clear visual of progress
- Store all expirables and certificates in one location
- Simplified multi-license tracking and management



Concierge Account \$124.99/yr

- Dedicated account manager
- One-on-one assistance to stay on track
- Never have to manually report CE/CME

Customer support



We've earned world-class NPS scores year after year



Our support team is 100% based in the United States and bilingual in English & Spanish



Trained on your unique renewal requirements



Live chat support is available at no additional cost



Available 7 a.m. - 7 p.m. CST, Monday-Friday



We offer a robust digital Knowledge Center available 24/7



The CE Broker

Licensee Experience



Abstract geometric lines in the top-left corner, consisting of several overlapping lines in different shades of blue, creating a star-like or web-like pattern.

Questions?

Abstract geometric lines in the top left corner, consisting of several overlapping lines in different shades of blue, creating a star-like or web-like pattern.

Thank you. 